

Continuous Ink Supply System
for
Epson Stylus Photo R230

Installation Instruction

For ST Prefilled Version

With Auto Reset Chips

This Version of the Continuous Ink Flow System comes with Prefilled Cartridges and Auto Reset Chips. You just need to fill the Reservoir bottles and print! The whole operation is very easy. It's really an effective tool to save your money.

CIS for EPSON stylus R230 Instruction

Thank you for purchasing ST Continuous Ink Supply System. We appreciate your support and will try our best to make your experience with our products a pleasant one. Printing has been a different experience ever since you installed ST Continuous Ink Supply system on your own printer. Just imagining being able to print without regard to the ink level in those expensive little cartridges.

Please take your time installing ST Continuous Ink Supply system. Do not remove your old cartridge until you have the ST CIS system primed and ready to install (to prevent the drying of heads). In addition, make sure you are getting perfect nozzle checks before installing the ST CIS system. The ST CIS system won't be able to work properly if the nozzles are previously clogged.

Most people get a perfect nozzle check the first time after installing the ST Continuous Ink Supply system; others may need to run two or three cleaning cycles or let the printer sit for a while before they get the perfect results.

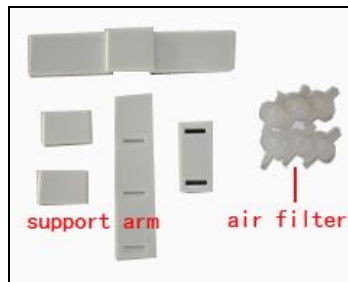
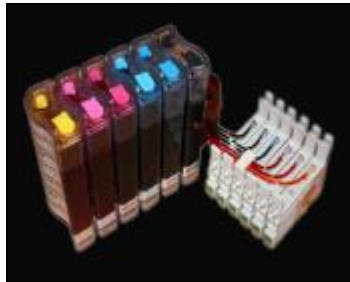
1、 General Guide:

1) Components

A、 CIS system 1 set
D、 Refill Kit 6pcs

B、 Air filters 6pcs
E、 Instruction CD 1pc

C、 Support Arm 1 set



2) Opening box inspection

- a、 Check whether all the accessories are ready.
- b、 Check whether there's the leakage of the CISS, whether some tubes have been separated from the CISS, whether there are air bubbles in the tube (If there exists more than 20CM air space, please kindly to contact with the local dealer)

2、 Printer testing:

- 1) Check whether the printer is in normal condition, like mechanical status, lubrication status etc.
- 2) Print testing lines to ensure the printing head is good condition.
- 3) Print pictures to see whether the printing image is ok.

3、 Installation Procedures:

1) First step



Put the CISS on the left side of the printer. In the meantime place all the tubes at correct position.



Pull out the small rubber plug from the air hole as above picture shown.



Place 4pcs of air filters into air holes, the thicker side is down into tank.

2) Second step: Remove cartridge



Press the ink cartridge replace button



Move the cartridge-car to the cartridge replace position



Unplug the power

3) Third step: Set up the Continuous Ink Supply System



Remove original cartridge



Insert our no-sponge cartridge into printer carefully



Close the cover for cartridge

4) Fourth step: Fix Support Arm



Tear off the sticker



Fix the arm on the 20cm right far from you printer



Tear off the sticker



Fix the balance arm

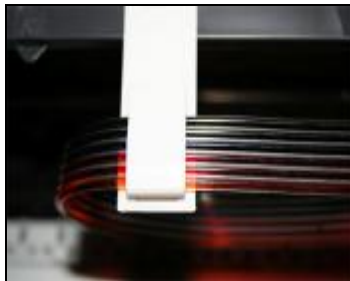


Tear off the sticker of clamp

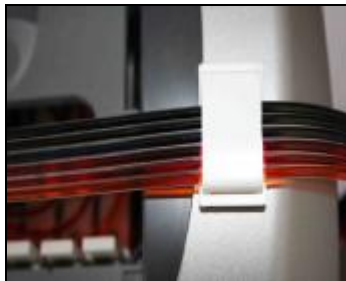


Attached the clamp on your printer and let it parallel with printer

5) Fifth step : Install tubeline

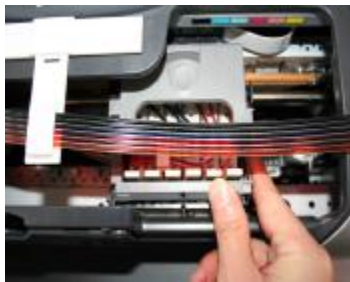


Insert tubeline through the arm



Finished

6) Sixth Step: Adjust the tubeline



Adjust the tubeline,remove the Cartridge-car back and forth



Make sure tubline will not meet printer when printing



Make sure the lenth of tubline is enough to reach the far left and right



Too long



twist



Perfect

7)Seventh step

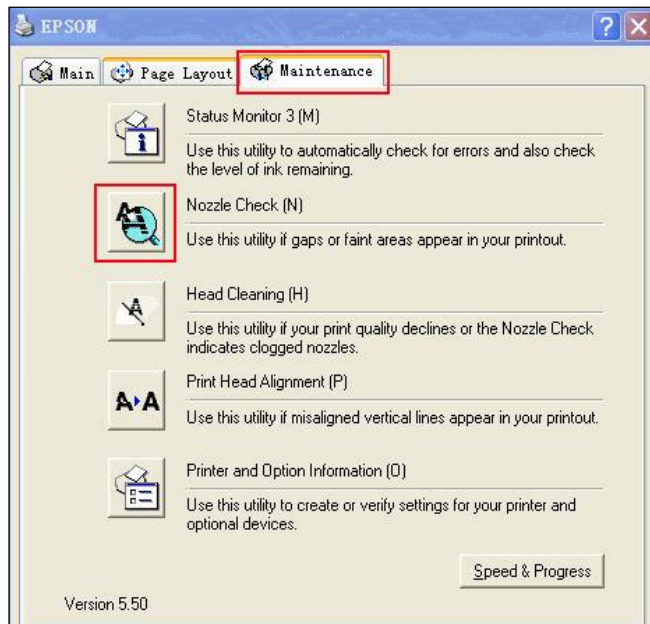


Instert the plug

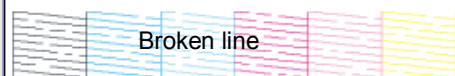


Turn on the power switch check wether all thing is usual

8)Eighth step: Nozzle check



Usual



Broken line

The nozzle check patterns are in broken-line, mostly because of small dusk entered into the nozzle, after repeated cleaning, if there is still a few broken line, pls let the printer don't work about 1 hour, then print the nozzle check pattern, maybe it works well.

4、 Reset Procedure:



If the indicator light flashing when printing, it tells that you need to reset the chip to full status. Please turn off your printer for about 30 seconds and switch it back on. Ink meter bar shall show full ink. You can start printing as usual.

5、 Refill Ink:



Please pay attention to the ink level in the reservoirs; if the ink level is below 1CM as the above picture shown, please use refill kits to fill ink into Reservoir bottles. Carefully pull out the rubber plugs from the refill holes.(there is possibility of ink spattering. Be careful!) Refill ink according to the color in short supply. Then put the rubber back. **(Please keep the printer and the reservoir at the same horizontal line during the process of refilling ink)**

6、 Attention for maintenance:

Take out the CISS including the inner cartridges and other components. Then remove support arm from printer, and place the original cartridges in. Please inquire local dealer before sending to maintenance.

Notice:

1. Please don't take out cartridge at random after installing the CIS system. Keep the reservoir bottles on the same level with the printer.
2. Try to keep at least 1/2 inch of ink in the bottles, as you don't want to run out of ink and draw air into the cartridge.
3. Don't place the Reservoir Bottles higher or lower much than the printer.

4. To be used in a dry place between 15 and 35 degree. Avoid exposure to direct sunlight.
5. Don't put the continuous ink supply systems reversed or leaning during the shipment. Please make sure all the ink filling holes and Ventilation holes are closed tightly during the transportation. Otherwise, the ink shall leak out.
6. Don't sway the cartridge frequently. It may cause ink leakage.
7. Don't pull out the connector of cartridge and don't tear off adhesive tape at the bottom of cartridge.

Warning:

1. Not drinkable; keep it out reach of children.
2. Avoid exposure to direct sunshine and don't keep it in high or freezing temperature.
3. Avoid collision and fallen down.